

LAUNCHPAD: **TOOLBOX TRAINING**

SURVEY ANALYSIS AND LAYER TOOLS

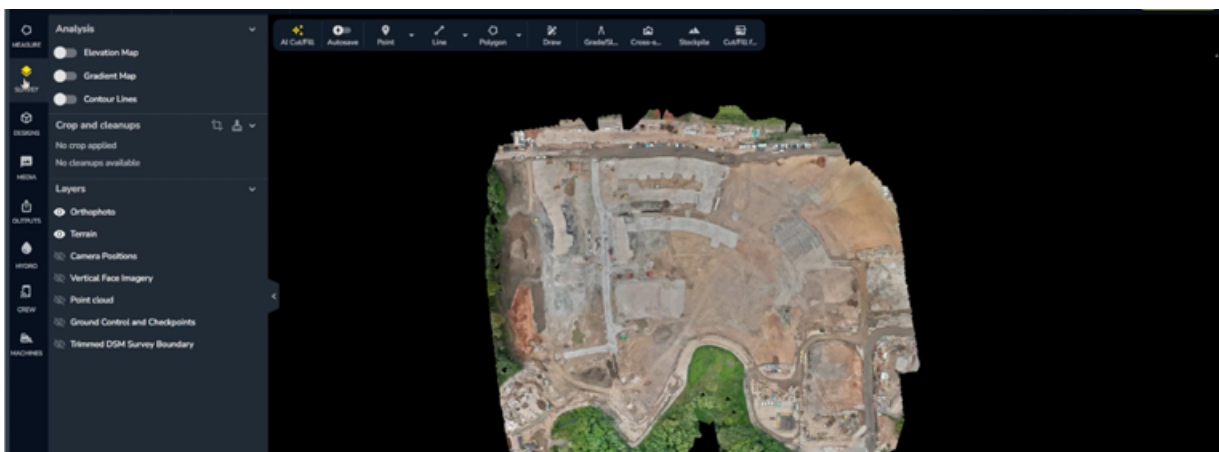
Key Terms

- Orthophoto: The primary imagery layer; keep this on for context.
- Terrain layer: 3D terrain; required for Elevation/Gradient/Contour tools.
- Elevation map: Heat map of site elevations in metres.
- Gradient map: Colour-coded map of slope percentages.
- Contour lines: Lines representing elevation intervals (major/minor).

Steps

1. Open Survey tab and locate analysis tools

- Open the Survey tab.
- In the Analysis section, you'll find Elevation map, Gradient map, and Contour lines.
- Crop & clean-up is listed below (covered in a future tutorial).



2. Know the core layers

- Layers include Orthophoto (keep on) and Terrain (3D).
- Camera positions, Point cloud, Ground control/Checkpoints, and Trimmed DSM are mainly for engineers.
- You'll mostly use Orthophoto, Terrain, and some Vertical face imagery.

3. Elevation map

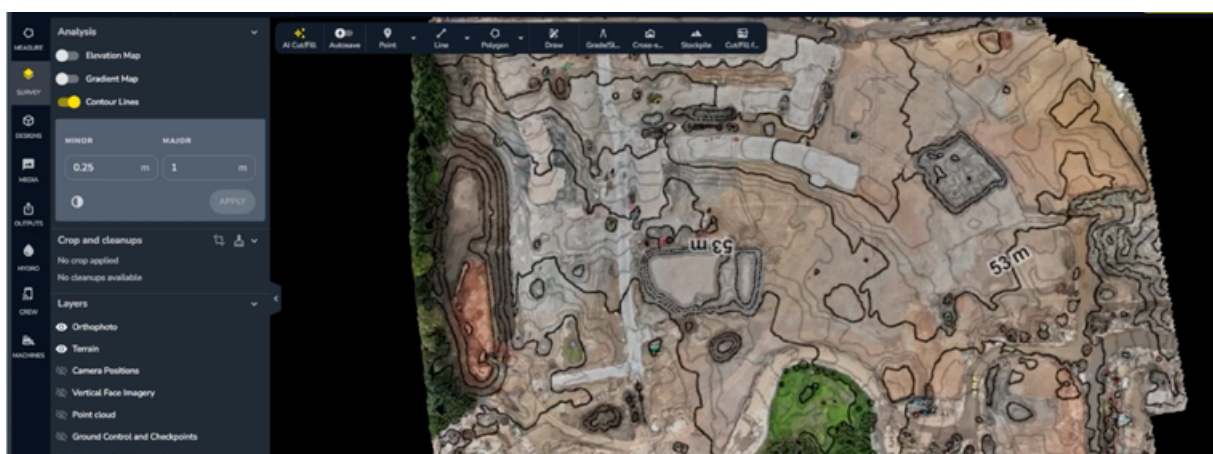
- Toggle Elevation map on to view a heat map of elevations in metres.
- Adjust colours, the height ranges they represent, and transparency as needed.

4. Gradient map

- Toggle Elevation map off and Gradient map on.
- Interpret colours: high values (steep) vs low values (flat).
- Choose stepped or smooth colours and adjust transparency.

5. Contour lines

- Toggle Gradient map off and Contour lines on.
- Use Contrast to switch contours between black and white.
- Set minor and major contour intervals to suit your requirements.



6. Terrain dependency

- Elevation map, Gradient map, and Contour lines require the Terrain layer to be on.
- With Terrain on, navigate in 3D; with Terrain off, you get a flat 2D view (useful for as-built XY work).

7. Vertical face imagery

- Toggle Vertical face imagery on to sharpen vertical building faces.
- Do not take level information from vertical faces: the drone may pick up eaves instead of walls.

Tips & Good Practice

- Leave Orthophoto on for context; toggle Terrain as needed for 3D vs 2D tasks.
- Set sensible contour intervals for readability; use Contrast on complex sites.
- Use Gradient map early to spot steep areas when building constraints plans.

Troubleshooting

- Analysis layers not showing: ensure the Terrain layer is enabled.
- Contours unreadable: adjust major/minor intervals or enable Contrast.
- Vertical faces still blurry: confirm Vertical face imagery is on (if available).
- Levels look wrong on façades: avoid using vertical faces for level measurements.

